



EIGG MOUNTAIN WIND POWER PROJECT

Renewable Energy Systems (RES) is pleased to welcome you to our community Open House for the Eigg Mountain Wind Power Project. Meet the team, learn more about the Project and get answers to your questions! **Please fill out a feedback form before you leave.**

**POWER
FOR
GOOD**



ABOUT RES



Renewable Energy Systems (RES) was founded in 1982 in London (UK) and is privately owned by the McAlpine family. Sir Robert McAlpine began a construction business over 150 years ago which is still owned by the McAlpine family today. RES is the largest independent renewable energy company in the world.

In Canada, RES was founded in 2005 and is headquartered in Montreal.

OUR VISION is a future
where everyone has access to affordable zero carbon energy





Recognition of the Mi'kmaq and their Ancestral Territory

We acknowledge the ancestral and unceded territory of the Mi'kmaq people. We also acknowledge the Mi'kmaq as the past, present, and future caretakers of this land, Mi'kma'ki.

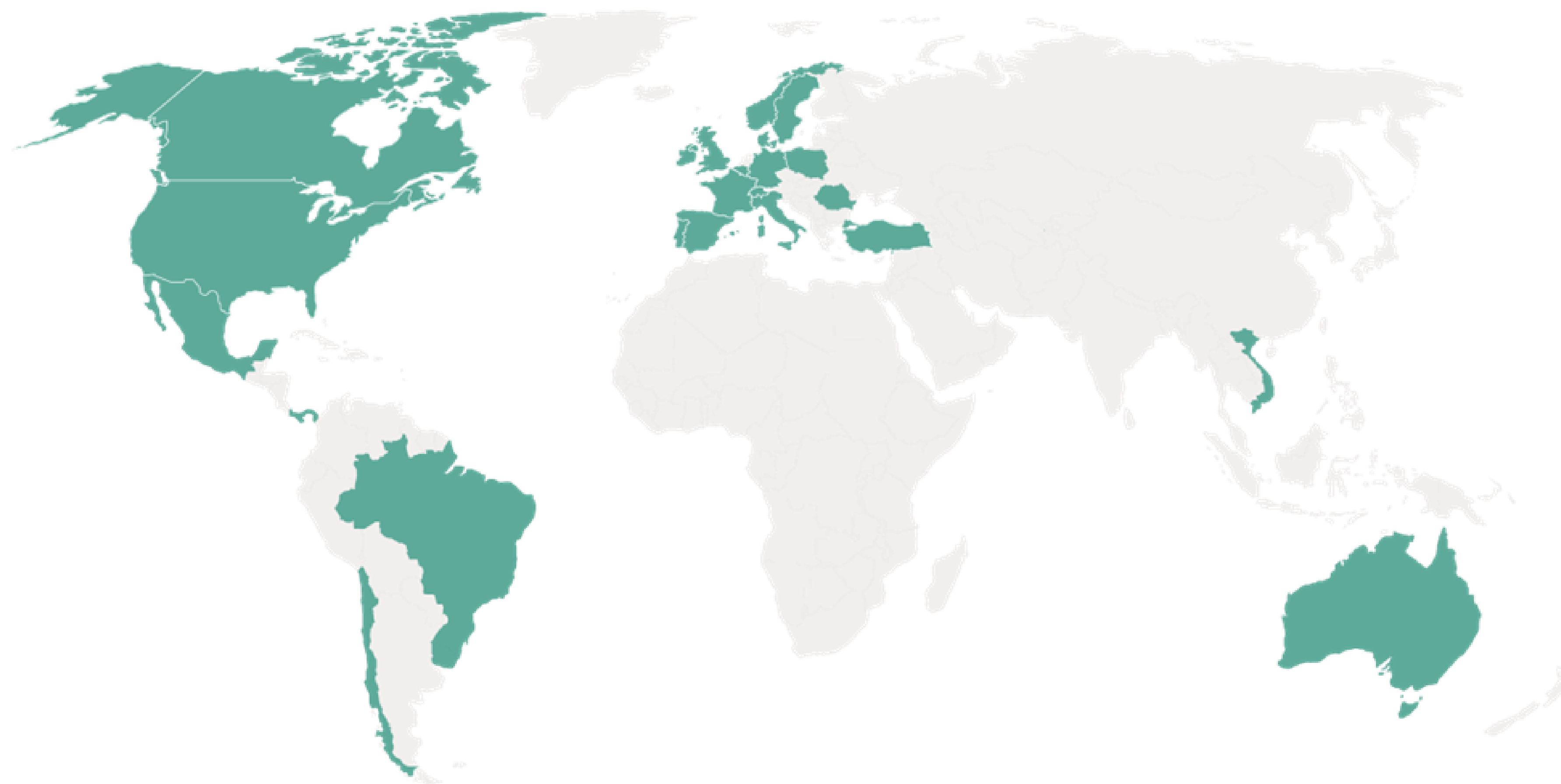


RES EXPERIENCE



RES is the world's largest independent renewable energy company, working across 24 countries and active in wind, solar, energy storage, green hydrogen, transmission, and distribution. An industry innovator for over 40 years, RES has delivered more than 28 GW of renewable energy projects across the globe and plans to bring more than 26 GW of new capacity online in the next five years.

RES is the power behind a clean energy future where everyone has access to affordable zero carbon energy bringing together global experience, passion, and the innovation of its 4,500 people to transform the way energy is generated, stored and supplied.



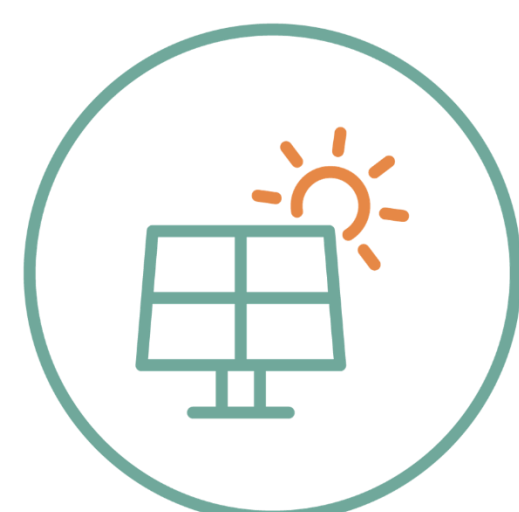
28GW PORTFOLIO

40+ YEARS OF EXPERIENCE

SUPPORTING **41**GW ASSETS



WIND



SOLAR



STORAGE



T&D



GREEN HYDROGEN



BIOMASS



COMMUNITY BENEFITS



Our projects benefit the local communities in which we work.

Benefits include:

- **Municipal tax revenues of \$1.3 million annually**
- **Landowner royalty income of approx. \$650,000 annually** throughout the life of the Project
- **Community Benefit Fund:** An **annual fund of \$1,000/MW, up to \$150,000**, managed by a committee of community members, municipal representatives and the project owner, to support community projects and initiatives
- **Construction and operations jobs and support services** during and after construction of the Project
- **Contract opportunities** for local businesses
- **Increased local spending** on goods and services during the Project's development, construction, and operational phases
- **Dedicated benefits for local Mi'kmaw Communities**, supporting economic participation and long-term community development

Ask a Project representative to learn more about community benefits or visit our website: www.eiggmountainwind.com



RES IN YOUR COMMUNITY



RES seeks to be an engaged corporate citizen in the community and supports various fundraising events and special initiatives that benefit the local community

Examples of activities or organisations RES has supported include:



Economic development
Local charities
Local sports teams
Community fundraisers
Snowmobile associations
Museums and libraries
...and many more!



Have an idea on how we could support the community? Let us know at: EiggMountain.Wind@res-group.com or leave a post-it on the next panel.



HOW CAN WE SUPPORT THE COMMUNITY ?

**DO YOU HAVE AN IDEA OF WAYS WE CAN SUPPORT YOUR COMMUNITY VIA SPONSORSHIPS,
CHARITABLE DONATIONS , LOCAL INITIATIVES OR OTHER?
LET US KNOW! GRAB A POST-IT AND LEAVE YOUR SUGGESTION HERE.**



PROJECT DETAILS



The Project is expected to:

- have a total capacity of up to 150 MW
- comprise no more than 25 turbines
- have turbines with a generation capacity between 5.7 to 8 MW each, with a hub height of up to 125 m, and a blade length of up to 90 m
- include a substation, operations and maintenance building and a temporary laydown yard
- include one temporary wind measurement tower (currently installed) as well as a temporary remote sensing measurement device (LiDAR), and one to two permanent wind measurement towers to assess and monitor wind resource
- Include a transmission line and switching station to connect in James River (approx. 20km)



WHY WIND AND WHY HERE ?



Provincial target to phase out coal and reach 80% renewable energy by 2030, ambitious goal!

NS has some of the most exceptional winds in the world, and the Eigg Mountain area has some of the best wind in the province.

Wider electrification will enable NS to replace \$5 billion spent on imported fuel, by tapping into much cheaper local, renewable power resulting in greater energy security.

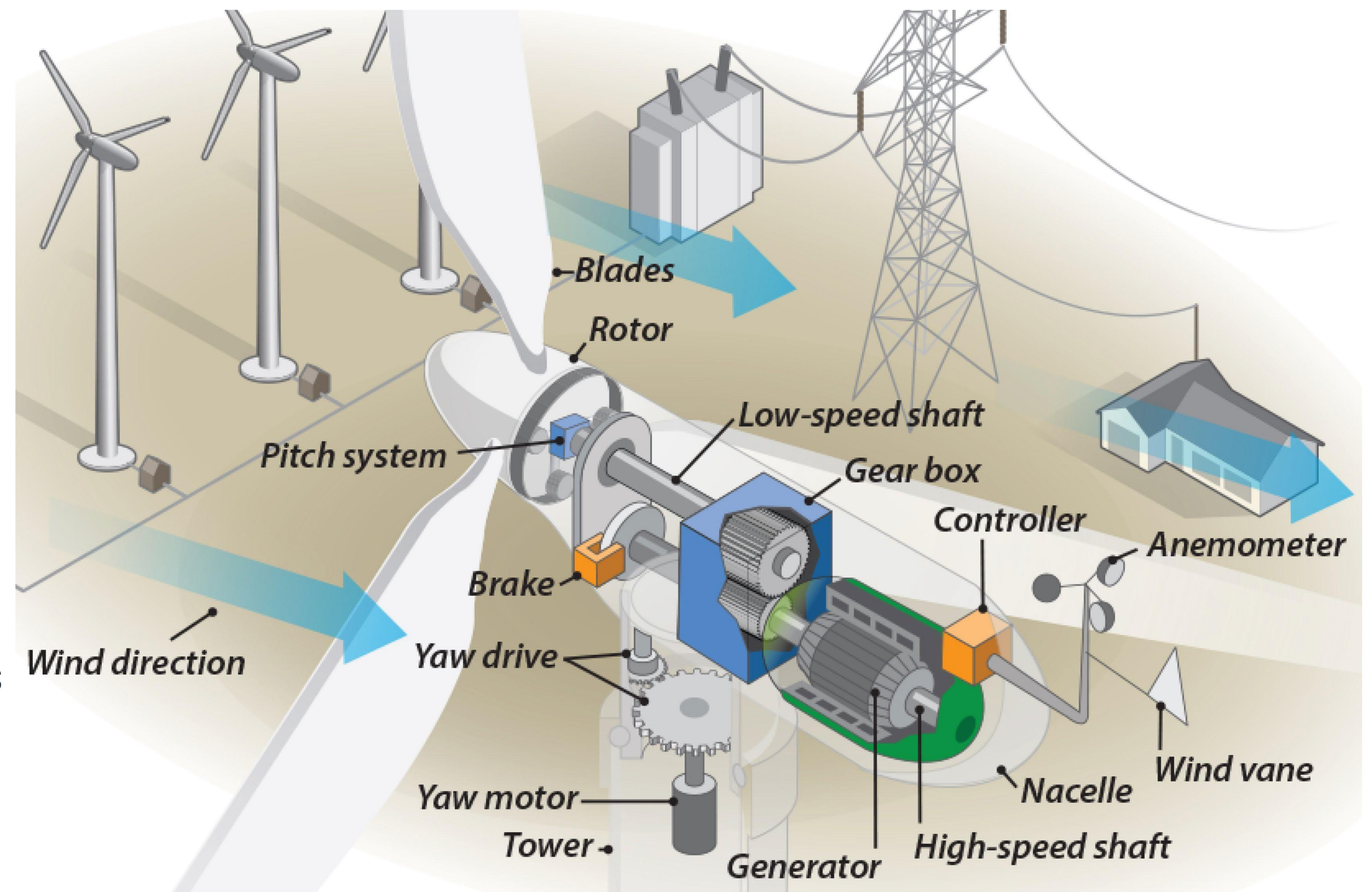


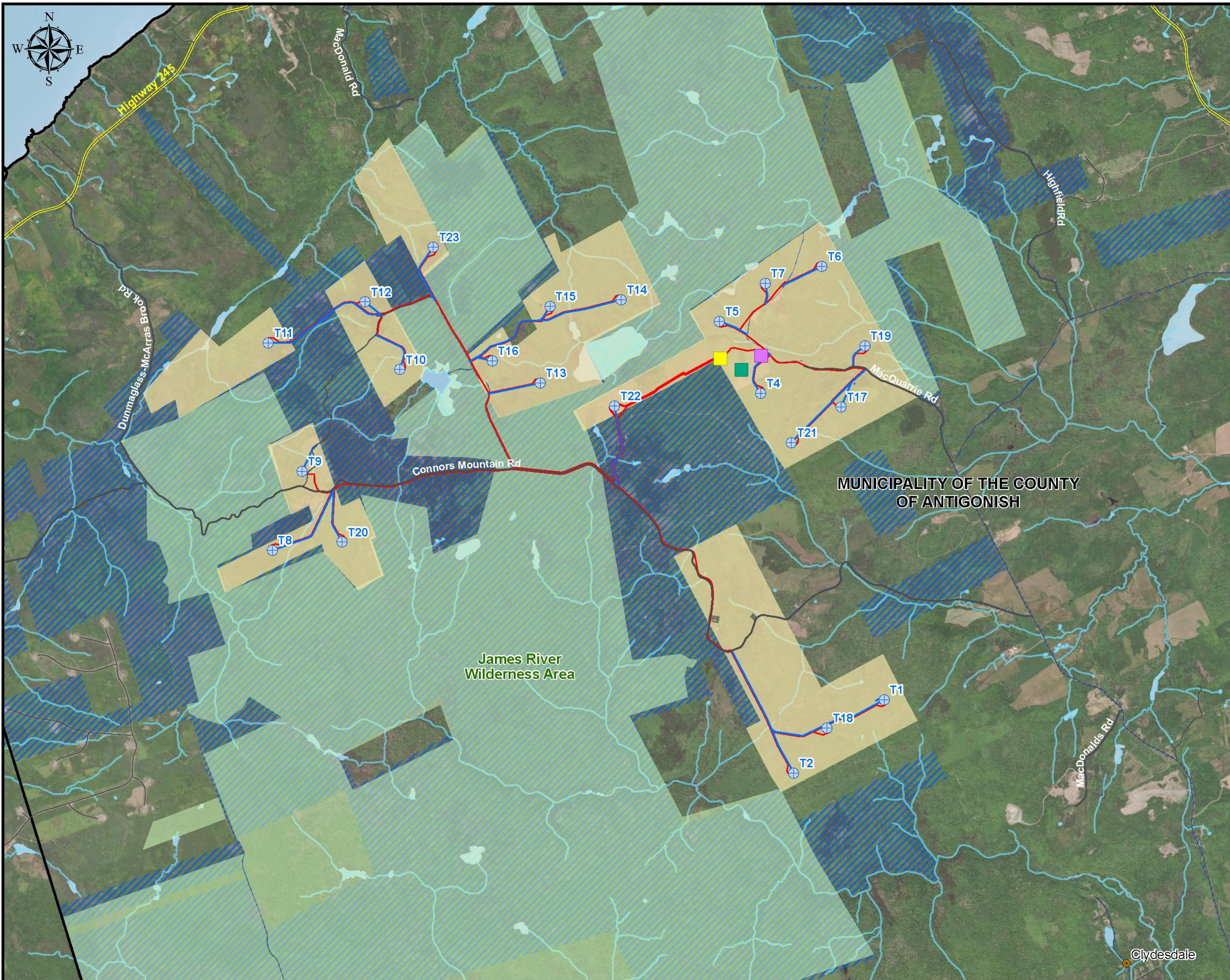
HOW WIND POWER WORKS

Modern turbines have three main components: the tower, the nacelle (which houses the generator) and the blades.

The blades rotate when the wind blows and are attached to a gearbox in the nacelle, which turns the generator and produces electricity.

Electricity is then converted to a medium voltage AC current, transmitted via overhead cables and is collected at a substation before being transmitted by overhead high-voltage power lines to the main electrical grid.





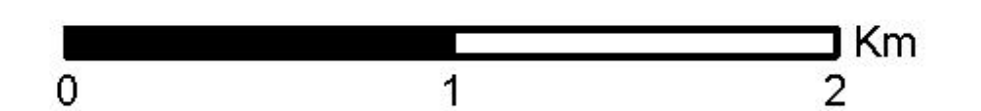
**EIGG MOUNTAIN WIND PROJECT
PRELIMINARY PROJECT LAYOUT**

LEGEND

- Proposed Turbine Layout
- Proposed Access Road
- Proposed Electrical Circuit
- Proposed Project Substation
- Proposed Operations & Maintenance Building
- Proposed Project Temporary Laydown Yard
- Participating Land
- Towns
- Roads
- Highway
- 138 kV Line
- James River Wilderness Area
- Crown Land
- Watercourse
- Waterbody
- Municipality

Absolute Scale
1:40,000

Coordinate System:
NAD 1983 UTM Zone 20N



**RENEWABLE ENERGY SYSTEMS
CANADA INC.**

This drawing is property of Renewable Energy Systems Canada Inc.
No reproductions may be made in whole or in part without permission.



Data Sources:
CanVec12, Altalis, ArcPRO Online
Date: April 2025
Layout 83
Format: 11x17

Subject to change in response to community feedback and results of ongoing field studies



RENEWABLE ENERGY SYSTEMS
 5605 Avenue de Gaspé
 Suite 508
 Montreal, Quebec, H2T2A4
 Phone: (514) 525-2113

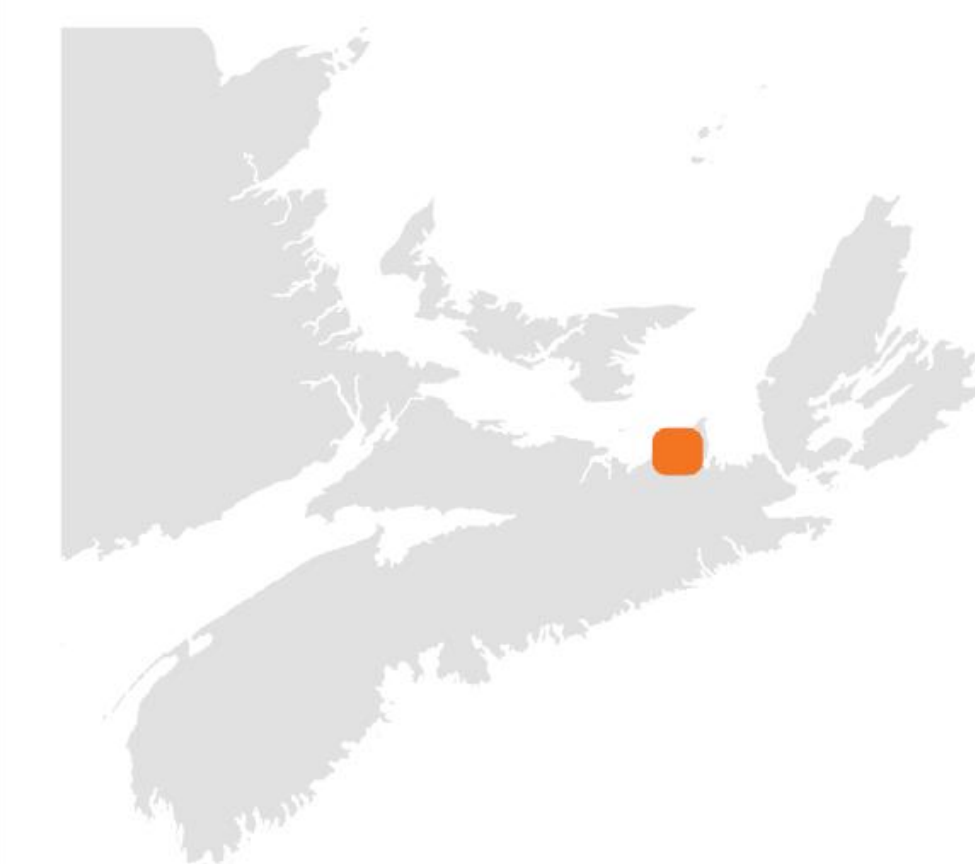
Legend

- ⊕ Eigg Mountain Turbine Layout
- ◆ Potential Receptor
- Substation
- Maryvale Wind Farm
- Glen Dhu Wind Farm

Shadow Flicker - Real Case (Hours per year)

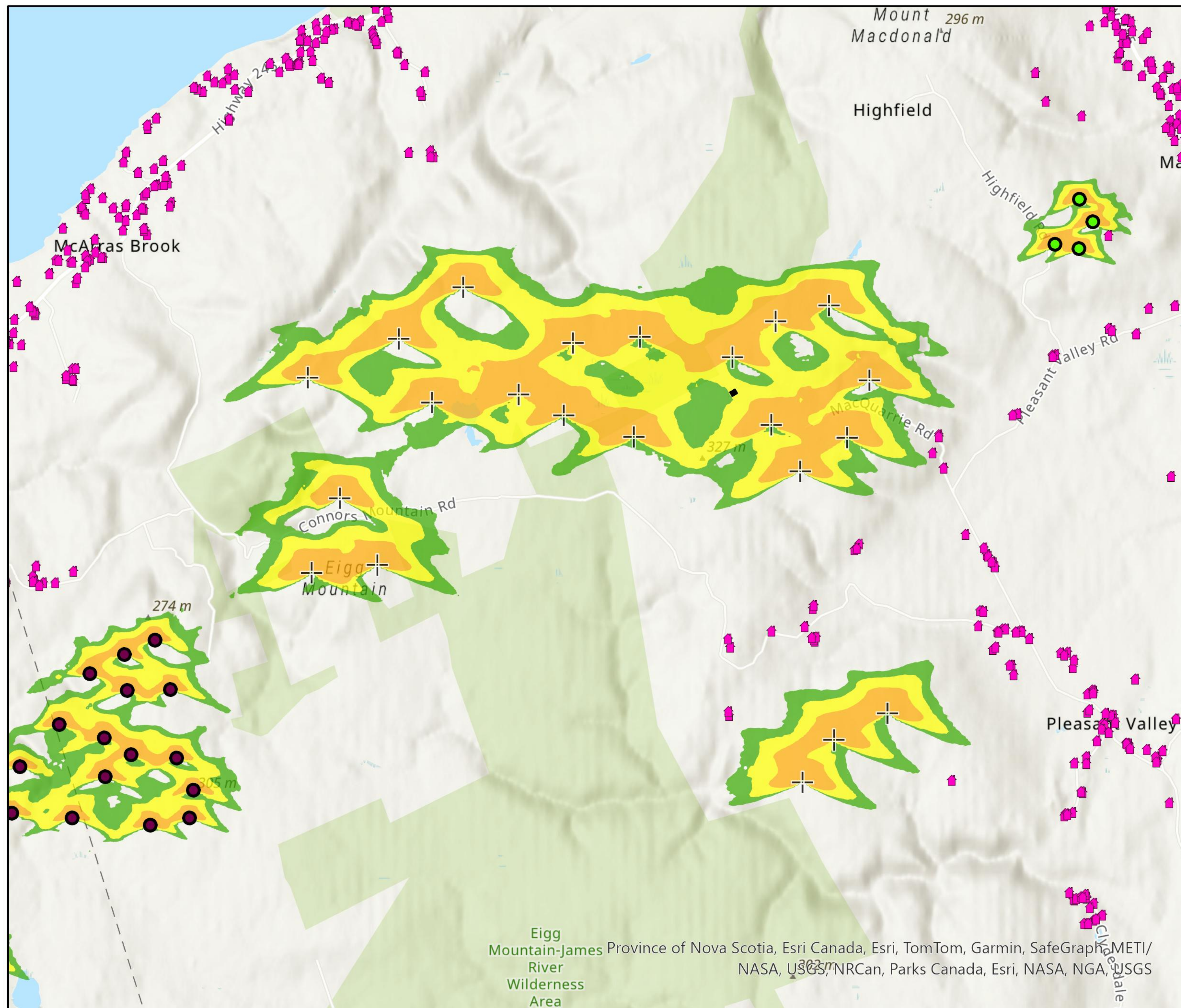
- < 30 hrs
- 30 - 50 hrs
- 50 - 100 hrs
- >100 hrs

Shadow Flicker modelling was performed using WindPRO 4.0



Predicted Shadow Flicker

Eigg Mountain Wind



0 0.75 1.5 km.
 0 0.5 1 mi.

PROJECT # 30777 MAP EDITOR ArcGIS Pro COORDSYS NAD 1983 CSRS UTM Zone 20N
 PROJECT CODE CANatg EDIT DATE 4/16/2025
 LAYOUT # 61 WIND ENG JM

This drawing is the property of RES America Developments Inc. and no reproduction may be made in whole or in part without permission.



RENEWABLE ENERGY SYSTEMS
 5605 Avenue de Gaspé
 Suite 508
 Montreal, Quebec, H2T2A4
 Phone: (514) 525-2113

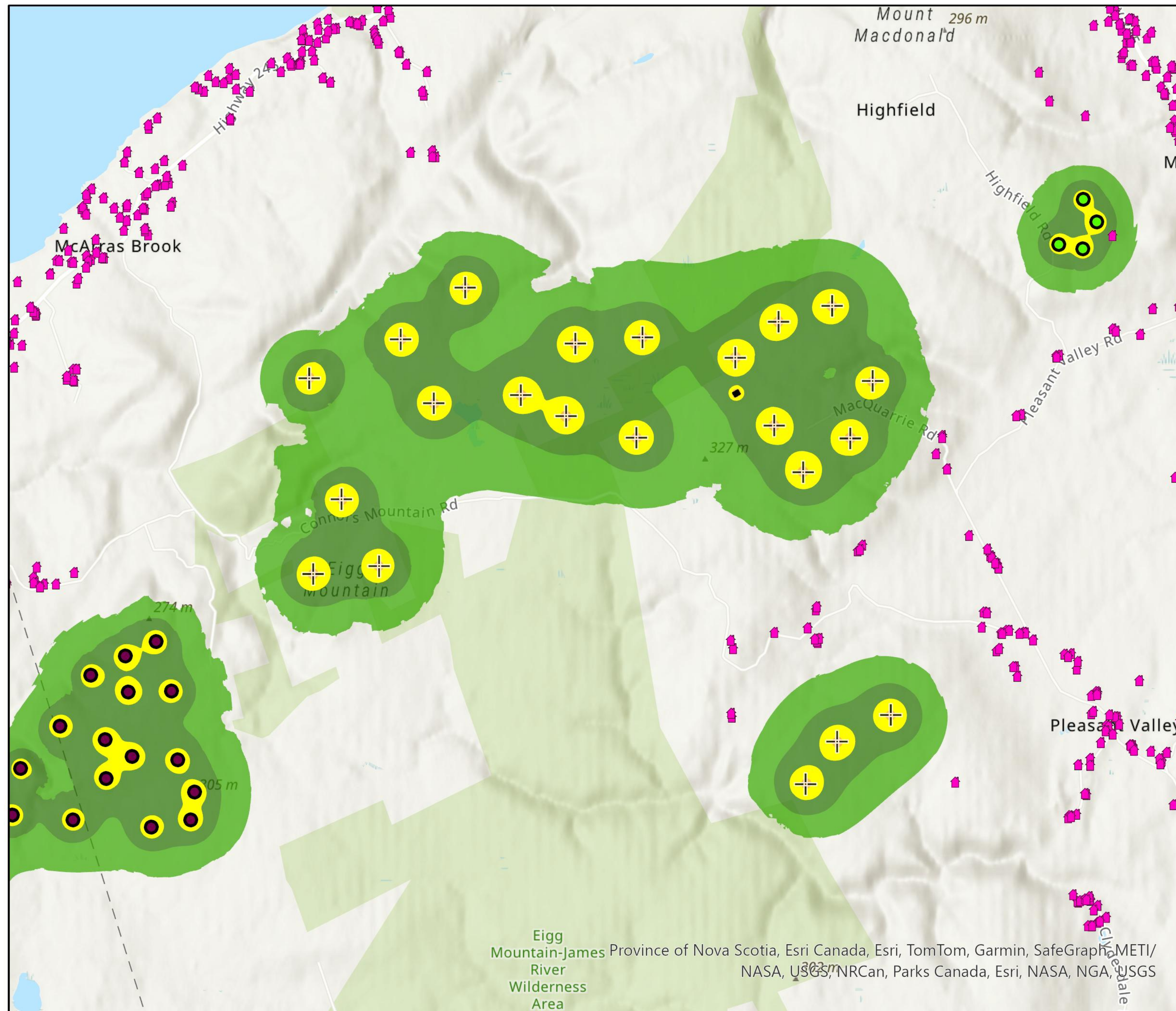
Legend

- Eigg Mountain Turbine Layout
- Potential Receptor
- Substation
- Maryvale Wind Farm
- Glen Dhu Wind Farm

Predicted Sound level (dBA) 22 WTGs - 35 dBA
 Ambient Sound Level included

- < 40 dBA
- 40 - 45 dBA
- 45 - 50 dBA
- 50 - 55 dBA
- > 55 dBA

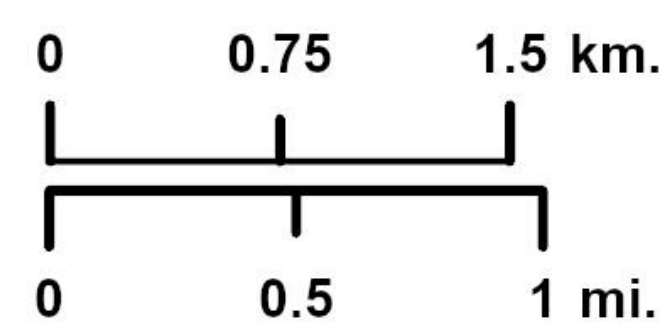
Noise modelling was performed in Cadna A Version 2020 MR2 and adheres to the ISO 9613-2 standard



Eigg Mountain-James River Wilderness Area
 Province of Nova Scotia, Esri Canada, Esri, TomTom, Garmin, SafeGraph, METI/NASA, USGS, NRCan, Parks Canada, Esri, NASA, NGA, USGS



1:65,000



PROJECT # 30777 MAP EDITOR ArcGIS Pro COORDSYS NAD 1983 CSRS UTM Zone 20N
 PROJECT CODE CANatg EDIT DATE 4/16/2025
 LAYOUT # 61 WIND ENG JM

Predicted Sound Level

Eigg Mountain Wind

This drawing is the property of RES America Developments Inc. and no reproduction may be made in whole or in part without permission.



To inform the Environmental Assessment, the following studies are ongoing and upcoming at Eigg Mountain:

ONGOING



Wildlife: Birds, Bats, Terrestrial Mammals



Wetlands: Delineation and Functional Assessments



Aquatics: Fish and Fish Habitat, Turtles, Water Quality

Flora: Plants and Lichens

Visual: Assessment



UPCOMING

Sound and Shadow Flicker: Assessment



Electromagnetic and Telecommunication: Assessment



Geotechnical: Detailed Investigation

Historical and Cultural: Archaeological, Mi'kmaq Ecological Knowledge Study

Cumulative Effects: Assessment

The Environmental Assessment registration is scheduled for submission Q1 2026.



ENVIRONMENTAL PROFILE



Site Characteristics

- ✦ The proposed project is near the Eigg Mountain – James River Wilderness Area.
- ✦ Much of the site consists of hardwood forest, with areas of mixedwood forest and smaller patches of coniferous forest and wetlands. Many areas are managed for forestry, including plantations and harvested stands at various stages of regeneration.
- ✦ Habitats within the site are suitable for Mainland Moose. Rare flora may occur within the site, particularly in old growth and wetland habitats. Other Species at Risk that may occur within the site include birds, bats, and turtles.
- ✦ The site has an existing network of roads and off-highway vehicle routes.

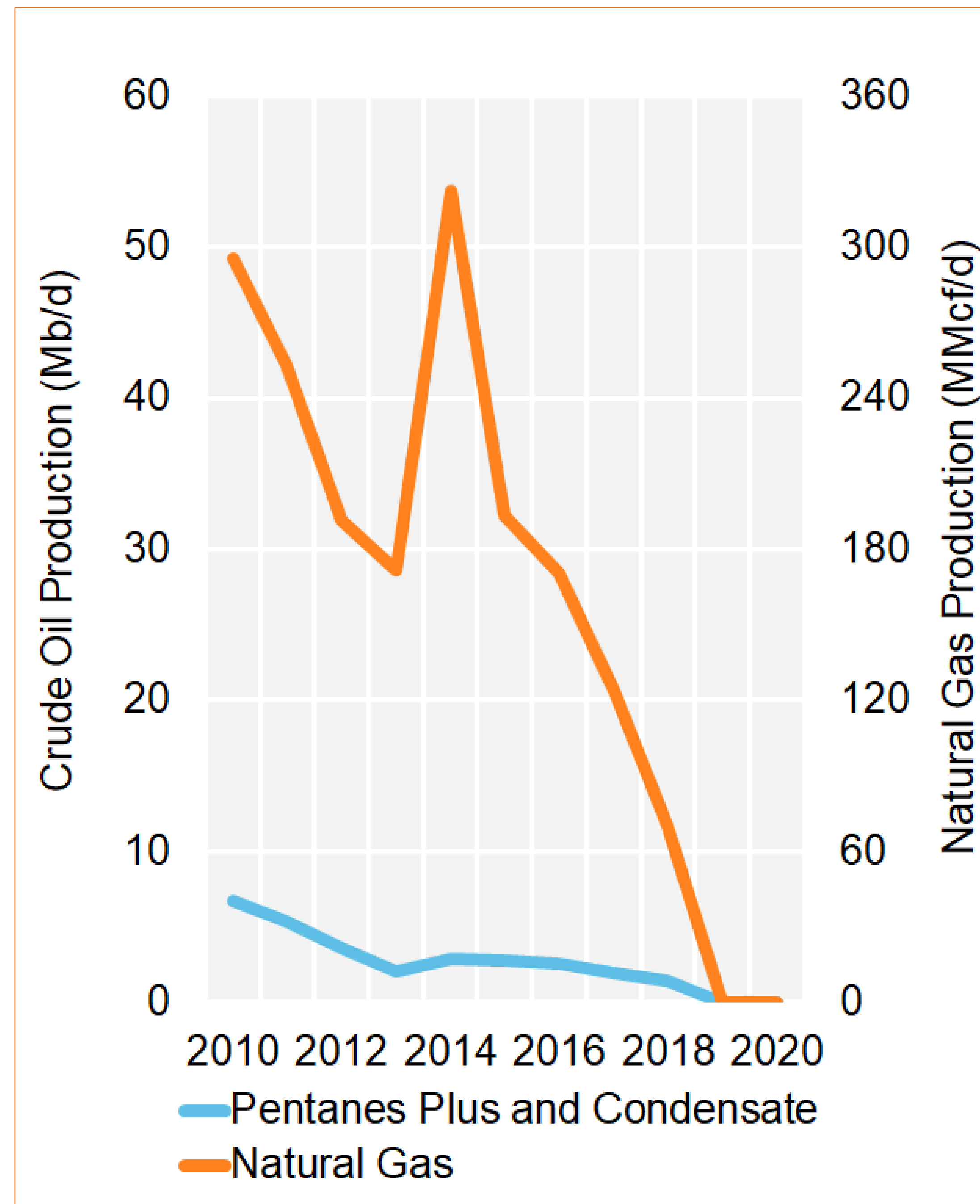
Environmental Assessment

- ✦ An environmental assessment is underway for the proposed Eigg Mountain Wind Project.
- ✦ An environmental assessment is a planning tool used to identify, predict, and evaluate potential environmental effects of the proposed project and inform responsible project design and decision-making.
- ✦ Baseline surveys will inform the placement of project infrastructure to mitigate and minimize potential impacts to wetlands, watercourses, Species at Risk, and other sensitive environmental features.

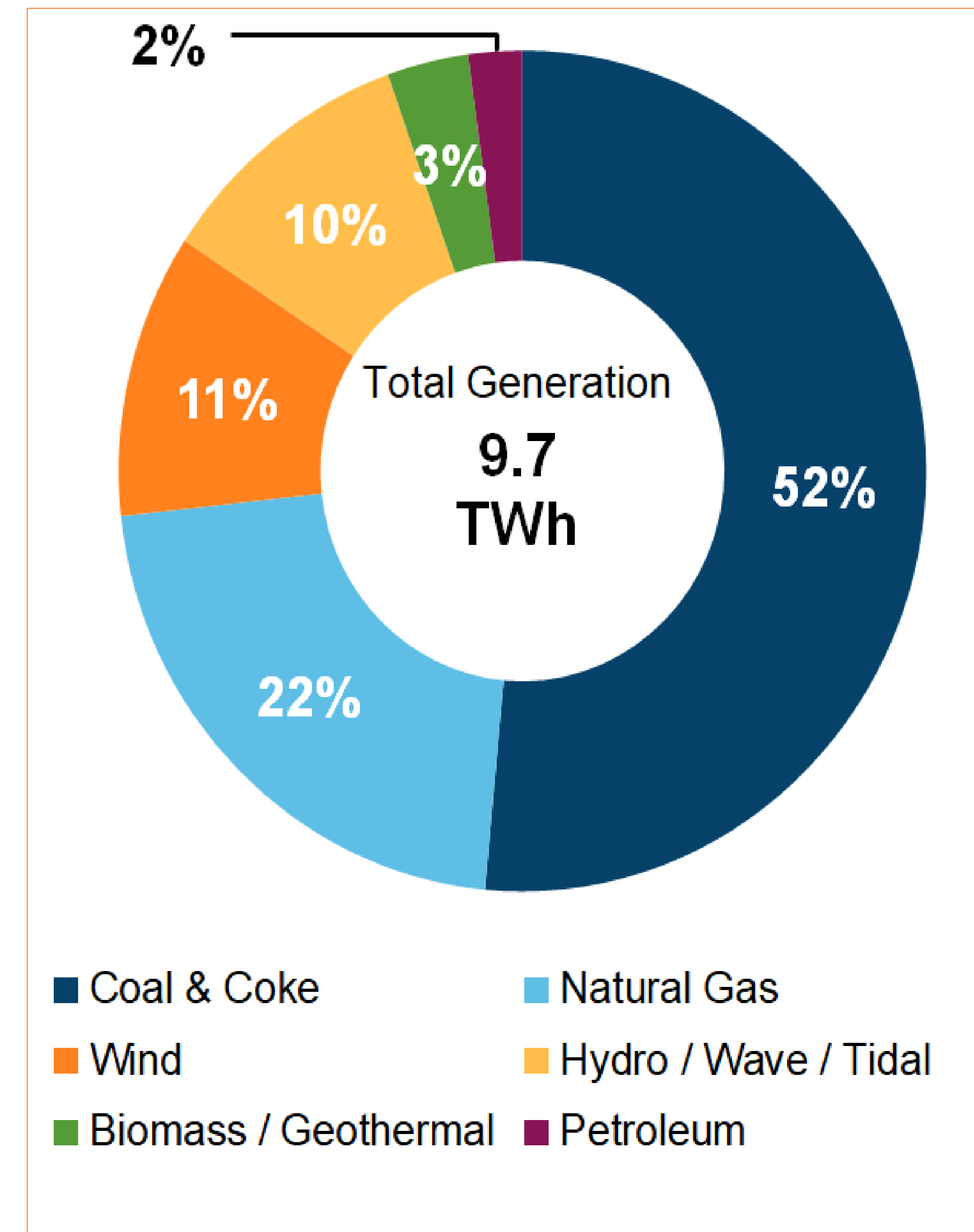




NOVA SCOTIA'S CURRENT ENERGY MIX



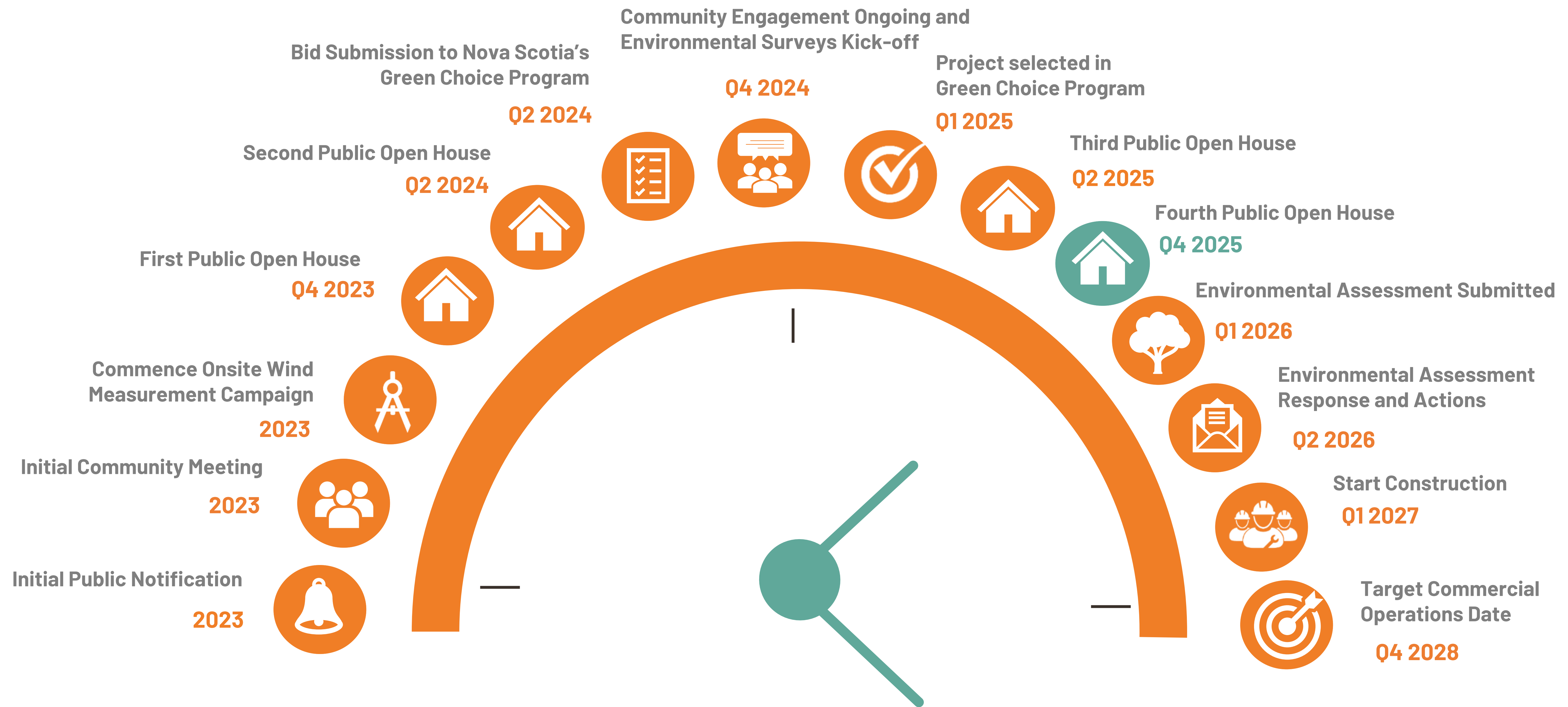
Limited Domestic Fossil Fuel Reserves



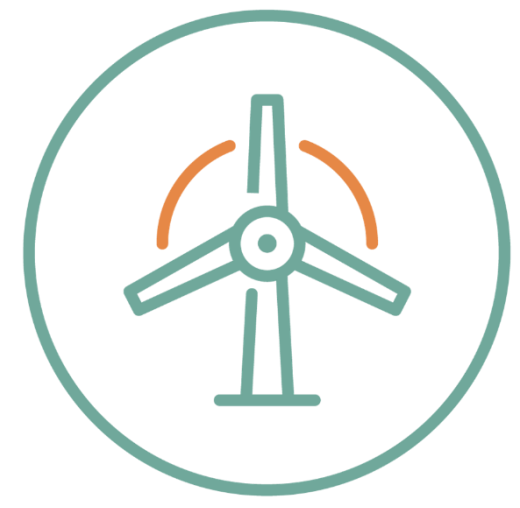
A HUGE Challenge – replacing majority of fossil fuel



PROJECT TIMELINE



Engagement continues through the life of the project



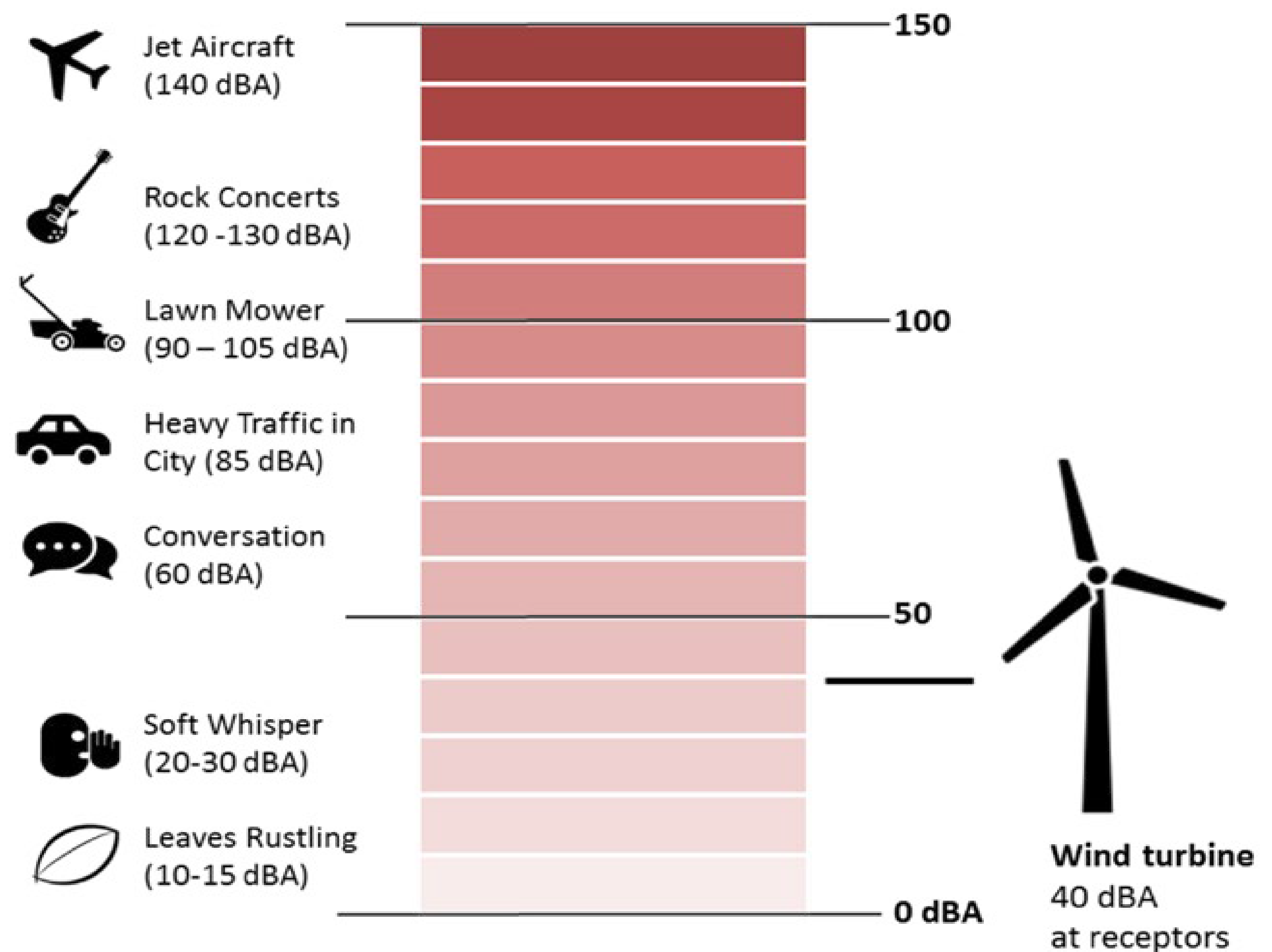
NOISE CONTROL



NOISE IMPACT ASSESSMENT

- Provincial regulations state that noise cannot exceed 40dBA at a residential dwelling (receptor)
- A noise assessment will be completed for all dwellings within 2 km of a turbine
- The noise assessment considers other operational projects and noise sources in the area
- Models will be prepared with 'worst-case' assumptions

Preliminary results show Project is compliant at all receptors within 2 km of the project.





REGULATORY APPROVALS



RES will seek sign-off/approval from the following regulatory agencies and permitting bodies:



Défense nationale National Defence



Environment and Climate Change Canada

THANK YOU!



We appreciate you taking the time to join us.
RES would be happy to follow-up with you if you have any other
questions about the Project.

EiggMountain.Wind@res-group.com

Please fill out a feedback form.

